

Summer 2017

# Summer Day Trips

Tel: 0151 357 4420

Email: [cheshire@ectcharity.co.uk](mailto:cheshire@ectcharity.co.uk)

[www.ectcharity.co.uk](http://www.ectcharity.co.uk)



in Cheshire

part of ECT Charity – your leading  
community transport provider

## Welcome to our Summer Day Trips programme!

ECT in Cheshire is part of ECT Charity, a leading transport charity in the UK which provides high quality, safe, friendly, accessible and affordable transport in local communities for those who find it difficult to use public transport.

### Our current services include:

**PlusBus** – providing door-to-door journeys in Chester, Ellesmere Port and Neston.

**Group Transport** – providing journeys to voluntary and community groups, with a professional driver.

**Evening Safe Transport** – providing evening journeys between 5.30pm and 10.30pm Monday to Saturday.

**Day Trips** – helping individuals to visit places of interest, both locally and further afield.

We are delighted to be offering our Day Trip services again over July, August and September 2017. We have some great trips scheduled over the summer and we hope there will be an outing of interest for everyone.

Read on to find out more about our latest programme of events. We hope to see many of you on one or more of the outings!



To find out more, visit us online at: [www.ectcharity.co.uk](http://www.ectcharity.co.uk)  
Or call us on 0151 357 4420

### Where can I go?

We are offering Day Trips to , Llandudno, Tweed Mill, Tatton Park, Liverpool, Bridgemere Garden Centre, as well as organising a North Wales coastal tour. For the dates of each of these Day Trips, please refer to the table overleaf.

We've chosen destinations that are as accessible as possible, however we would encourage you to contact the venue if you have any specific questions or concerns. This applies particularly if you are a wheelchair or scooter user.

### How much does it cost?

As part of ECT's charitable activities and community benefit, we are offering these trips free of charge.

Admission charges, food and refreshments are purchased by the passenger.

### How do I book?

To book a place on a Day Trip, please complete and return the enclosed booking form as soon as possible.

### Where will the bus pick me up from?

Your own front door! Just like PlusBus, our helpful drivers will collect you from your home address, so there's no need to make your way to any central pick-up point. At the end of the day, the driver will drop you back to your front door.

### Can I bring a wheelchair or scooter?

Yes! If you want to bring your wheelchair or scooter, please provide the relevant details on the booking form. We will ensure that your vehicle is accessible and that the driver will help you board. We advise you to book as early as possible as spaces for scooters and wheelchairs are limited.

### Can I bring an escort?

Yes! If you need an escort to come with you, please let us know on the booking form.

### What if I require a carer?

If you require a carer, they will need to be provided by yourself. Please let us know on the booking form.

### What if I need to cancel?

Please give us as much notice as possible so that we can offer your place to someone else.

### Have you got any suggestions for other Day Trip destinations?

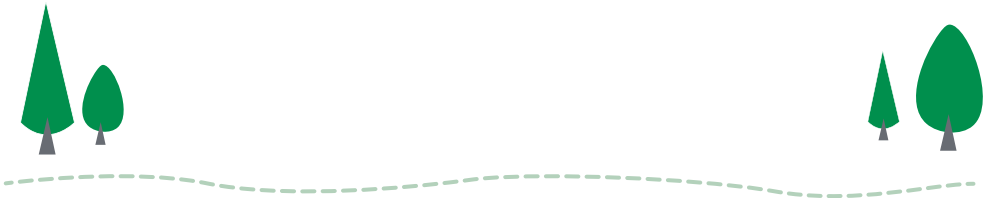
We're always looking for new ideas, if you have any suggestions about possible future destination for local Day Trips, please let us know where you'd like to go!



# Summer Day Trips programme

Date	Destination	Pick up time	Arrival home
Sat 22 <sup>nd</sup> July	Llandudno	9:00 AM	5:00 PM
Sat 29 <sup>th</sup> July	Tweedmill	9:00 AM	5:00 PM
Sat 5 <sup>th</sup> August	North Wales coastal tour	9:00 AM	5:00 PM
Sat 12 <sup>th</sup> August	Tatton Park	9:00 AM	5:00 PM
Sat 19 <sup>th</sup> August	Liverpool	9:00 AM	5:00 PM
Sat 2 <sup>nd</sup> September	North Wales coastal tour	9:00 AM	5:00 PM
Sat 9 <sup>th</sup> September	Bridgemere Garden Centre	9:00 AM	5:00 PM
Sat 16 <sup>th</sup> September	Llandudno	9:00 AM	5:00 PM

More detailed times will be given in the week before your trip.



## Llandudno

This is Wales' largest seaside resort. You could try out the cable-hauled tramway, the longest pier in Wales or enjoy a picnic on the Blue Flag beach! There are plenty of shops and eating opportunities too. After all passengers have been picked up, the scenic journey to Llandudno will take about an hour and a half. Once we arrive, we expect to spend three or four hours at Llandudno.

Pick-up from 9am  
Return home at 5pm

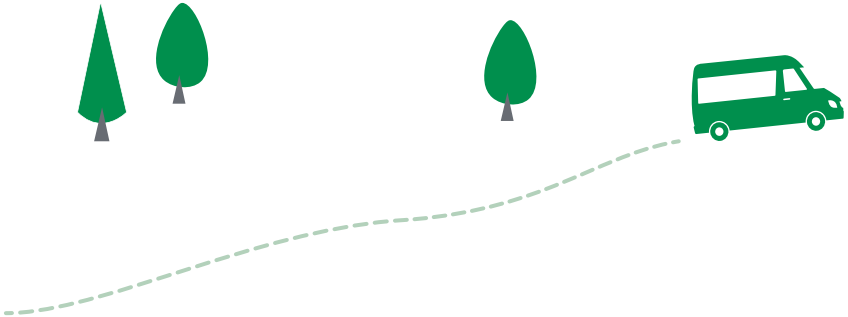
**Date of trip:** 22<sup>nd</sup> July  
& 16<sup>th</sup> September

## Tweedmill Shopping Outlet

A total shopping experience, with the best local produce and household names under one roof. Expanded and refurbished in 2014, Tweedmill is your one stop destination for so much more than shopping. Two floors conveniently placed at the gateway to North Wales. With a massive choice and fantastic prices, your favorite brands and the very best of local Welsh produce all in one place. The best artisan food and drink available in Wales under one roof.

Pick up from 9am  
Return home at 5pm

**Date of trip:** 29<sup>th</sup> July





### North Wales coastal tour

This trip may suit passengers with limited mobility; we will collect you from your home and make our way down the North Wales coast following the coastal road through the picturesque towns and villages along the way. We will be stopping off at a coastal café for something to eat or you are welcome to bring a flask and a packed lunch. Then off to Llandudno, where we will stop off at the pier, followed by a trip around the beautiful Great Orme private coastal road before heading home.

Pick up from 9am  
Return home at 5pm

**Date of trip:** 5<sup>th</sup> August

### Tatton Park

This early 19th-century mansion sits amid a landscaped deer park and is opulently decorated, providing a fine setting for the Egerton family's extensive collections. The theme of Victorian grandeur extends into the garden with its glasshouses, formal gardens, Italian and Japanese gardens. The Gift Shop has a stylish new look and you can now relax and take morning coffee, lunch or a special afternoon tea in the cosy atmosphere of the Gardener's Cottage. Tatton Hall is particularly accessible although some areas require the use of stairs.

Admission Price:

There are three main attractions at Tatton Park. Tatton Hall, the Gardens and the Farm. Admission is £7.00 for each attraction or £13.00 for all areas.

Free Mobility scooters are available (refundable £10.00 deposit) to explore the gardens. If you would like us to book one in advance please let us know.

Pick up from 9am  
Return home at 5pm

**Date of trip:** 12<sup>th</sup> August

## Liverpool

With its unique attractions, exciting events, unrivalled musical heritage and famously warm welcomes, Liverpool is the ideal destination to visit and explore. We offer three pre-arranged drop-off points on this trip.

**Liverpool One Shopping Centre:** This shopping centre offers more than 160 famous high-street shops. You can also visit the restaurants and cafes on the terrace overlooking Chavasse Park.

**Docklands:** The Docklands are home to award-winning attractions including the Beatles Story, International Slavery Museum, Merseyside Maritime Museum and Tate Liverpool. Visitors can also enjoy a great selection of restaurants.

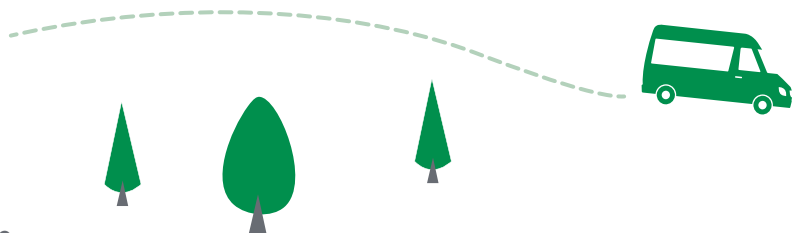
**Walker Art Gallery:** The Walker Art Gallery holds a stunning collection of paintings, sculptures and decorative arts spanning over 600 years. Home to outstanding works by Rubens, Rembrandt, Poussin and Gainsborough, the Walker Art Gallery is also one of the finest art galleries in Europe.

Pick up from 9am  
Return home at 5pm

**Date of trip:** 19<sup>th</sup> August

## Bridgemere Garden Centre

With a total area of 130 acres, Bridgemere is one of the largest garden centres in Europe. The centre sells over five thousand plant varieties, most of which are grown locally. A 7-acre display garden dating from around 1985 is open to the public free of charge. Designed to inspire amateur



gardeners, it is composed of more than twenty separate gardens, including English country, Victorian, Mediterranean, woodland, water, rose and patio gardens. The display also includes recreations of prize-winning gardens from the Tatton Park and Chelsea Flower Shows, as well as the garden in which the 1993 television series Gardener's Diary was filmed. Other facilities include a restaurant and coffee shop.

Pick up from 10am  
Return home at 5pm

**Date of trip:** 9<sup>th</sup> September





Junction 8 Business Park, Unit 5a, Rossfield  
Road, Ellesmere Port CH65 3AS

ECT in Cheshire is part of ECT Charity, the umbrella brand representing Ealing Community Transport, a company limited by guarantee, company no 07211806, registered with the Charity Commission, charity no 1135354, Greenford Depot, Greenford, Middx, UB6 9AP



part of ECT Charity – your leading  
community transport provider